

# Year 1 Plants Knowledge

## Organiser

### Wildflowers and Garden Plants

**Wildflowers** – Grow naturally by themselves.

**Garden Plants** – Are planted by humans usually in gardens.



Poppy



Tulips

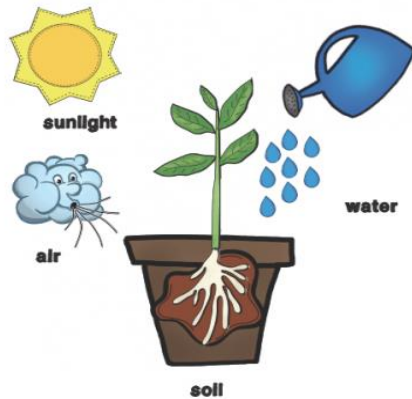


Dandelion



Sunflower

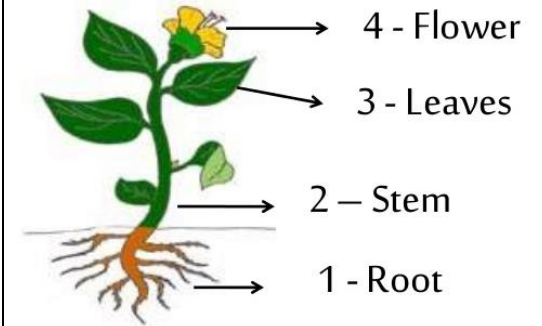
### What does a plant need to grow?



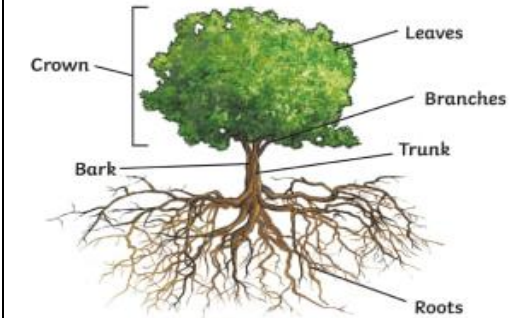
### Key Vocabulary and definitions

<b>Leaf</b>	The part of the plant that is mostly green, but may change colour. It is usually attached to a stem or stalk.
<b>Flower</b>	The brightly coloured part of the plant that blossoms.
<b>Petal</b>	Thin and brightly coloured part of the flower.
<b>Roots</b>	Grows underground and absorbs water and nutrients.
<b>Stem</b>	Main stalk of a plant or flower.
<b>Bark</b>	The outer covering of a tree trunk.
<b>Branches</b>	Part of the tree that grows from the trunk.
<b>Trunk</b>	Large stem of a tree.
<b>Seed</b>	Small part of a flowering plant that grows into a new plant.
<b>Crown</b>	Uppermost part of the tree.

### Parts of a plant



### Parts of a tree



### Deciduous trees

Deciduous trees lose their leaves in the Autumn and the leaves on these trees will change colour.



### Evergreen trees

Evergreen trees stay green all year round. The leaves do not fall off the tree.

